



Caltite waterproof concrete system

The Caltite waterproof concrete system is a time-proven, practical system which produces damp-proof, highly durable concrete which can be used either as a stand-alone system or incorporated as part of a dual system when required.

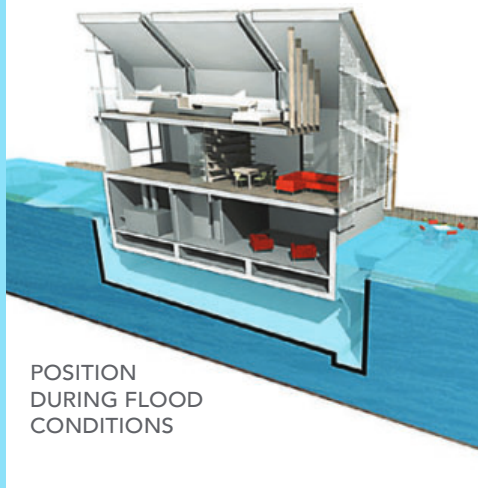
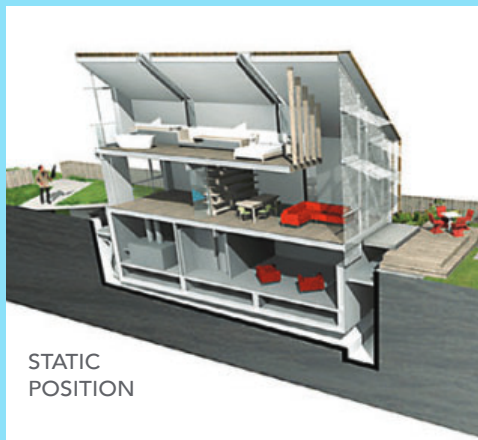
Caltite has a successful track record of over 60 years helping designers, developers and owners waterproof and protect concrete structures, even under the most aggressive conditions, including over 55 years of experience in corrosion protection.

To arrange a CPD or online CPD using Zoom, Microsoft Teams or Skype, please don't hesitate to contact us.

CALTITE CAN BE USED IN:

- All grades of basement structures - car-parks, plant rooms, habitable areas and archival storage.
- Swimming pools, marine environments, aquariums and water tanks
- Tunnels, underground stations and electrical sub-stations
- Hygienic environments (e.g. hospitals, abattoirs & food processing plants)
- Sewage treatment, manufacturing and industrial applications
- Acidic environments
- Energy from Waste (EfW) plants

The Amphibious House



The Amphibious House featured in 'Grand Designs' was built on the flood banks of the River Thames in Marlow, situated in its own dock.



The house is designed to allow the natural movement of rising flood-waters over the site without any flooding of the house itself. The 'dock' was constructed in an excavation extending up to 5 meters below mean river level. Four tall galvanised steel Dolphins were installed around its perimeter to guide and stabilise the house structure during floatation. The Caltite concrete basement slab and retaining walls of the house structure itself were then constructed inside the dock. The dock structure however is constructed with ordinary concrete and is designed to permit rising flood-waters to enter into the approximately 600mm space between the dock and the basement structure. This allows the entire house to rise and float when sufficient flood water has entered into the dock as it is unable to penetrate the Caltite concrete.



For a fascinating video of the building of this house, visit Grand Designs on YouTube at www.dailymotion.com/video/x6hhq2d

Caltite also provides hugely enhanced performance even in the most aggressive of situations

Ordinary un-reinforced concrete pipeline support chairs were cast in a tidal creek in South Australia. The water in the creek has high levels of chlorides (53,000mg/litre) and sulphates (7,200mg/litre). All forms of corrosion in concrete require the presence of water - so ultra-low porosity concrete provides a high level of resistance to corrosion.

In 1962, using light reinforcement around the corroded chairs, concrete containing Caltite was placed as a protective 'jacket' to extend the life of the support chairs. The Caltite concrete support chairs remain in service today, **corrosion-free after over 58 years.**



Pipeline support chair cast in 1960 with ordinary concrete after 19 years



Cast in 1962 to replace damaged chair, with Caltite - condition after 40 years



Condition after over 50 years

The Caltite quality control system



Advantages of using Caltite waterproof concrete

REDUCTION IN CONSTRUCTION COSTS

Caltite delivers the maximum usable area to the client by enabling the structure to extend to the site boundaries and eliminates the need for additional excavation to allow for the installation of external tanking.

With Caltite there is no need for cavity walls and associated drainage and the structure is waterproofed as the Caltite concrete is placed.

PEACE OF MIND

Caltite admixture is added by Cementaid personnel at the Ready mix concrete supplier's batch plant. We also attend site to record the placement details of the Caltite System concrete.

GUARANTEE

Cementaid (UK) Limited for UK projects, or Cementaid (Ireland) Limited for projects in the Republic of Ireland, provide a standard 20 year performance guarantee on all projects.

SERVICE BENEFITS

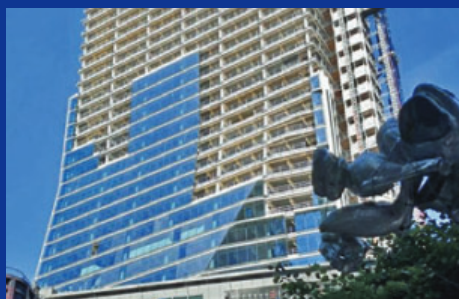
- Over 60 years' experience of waterproofing using the Caltite system
- Personal service with directly employed workforce
- Quality Assurance and aftercare service
- All technical staff are CSSW qualified
- 20 year guarantee
- Single guarantee where appropriate dual waterproofing system is required

Caltite is recognised the world over. Here are just a few of the projects where it has been used.



KING STABLE STREET, ETON

ARCHITECT: Yigal Yonetz
CONSULTING ENGINEERS: Ward Cole
MAIN CONTRACTOR: Haymills
CONCRETE USED: 754 cubic metres



100 BISHOPSGATE, LONDON, EC2

ARCHITECT: Allies & Morrison
CONSULTING ENGINEERS: Robert Bird & Partners
MAIN CONTRACTOR: Multiplex
CONCRETE USED: 5,526 cubic metres



ALL ENGLAND LAWN TENNIS CLUB, basements for courts 14 & 15

ARCHITECTS: Grimshaw Architects
CONSULTING ENGINEERS: Westmuckett Hawkes
MAIN CONTRACTOR: Galliford Try
CONCRETE USED: 2,917 cubic metres



TRINITY COLLEGE, DUBLIN

ARCHITECT: RKD
CONSULTING ENGINEERS: Arup
MAIN CONTRACTOR: PJ Walls Construction
CONCRETE USED: 3,500 cubic metres



GSK, BRENTFORD

ARCHITECT: RWL
CONSULTING ENGINEERS: WSP
MAIN CONTRACTOR: Mace Management
CONCRETE USED: 12,509 cubic metres

For further information, technical advice and specification details please contact:

CEMENTAID (UK) Limited
1 Baird Close, Crawley, West Sussex,
RH10 9SY

Tel: 01293 653900 | **Fax:** 01293 447880
info@cementaid.co.uk
www.cementaid.co.uk

CEMENTAID (Ireland) Limited
Clifton House, Lower Fitzwilliam
Street, Dublin 2

Tel: (01) 676 0134 | **Fax:** (01) 661 5200
info@cementaid.ie



LEGOLAND HOTEL, WINDSOR

ARCHITECT: Manser Associates
CONSULTING ENGINEERS: Simpson Associates
MAIN CONTRACTOR: McGoff Construction
CONCRETE USED: 1,219 cubic metres



CONCRETE'S WATERPROOFING SOLUTION

Caltite has been established for over 60 years and has a wealth of research and site proven experience and certification behind it. We pride ourselves on our collaborative involvement with engineers and architects to achieve client objectives and have developed long-standing relationships with main contractors, Sub-contractors and specialist concrete frame and groundworking organisations throughout the UK and Ireland.